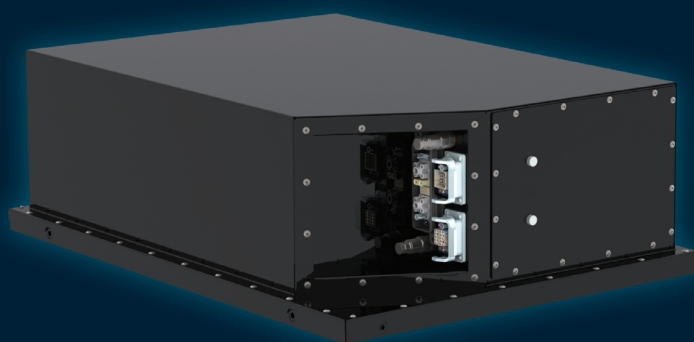


UVES Power Gen 2.0

Battery Pack LTO 15,2 kWh



- Lithium-ion technology LTO
- High power and longlife solution (for hybrid and fuelcell vehicle)
- Modularity
- Designed for bus application and commercial vehicle
- 288S1P cells configuration
- Thermal Management System
- Homologated: UN ECE R100.02 and UN ECE R10.06

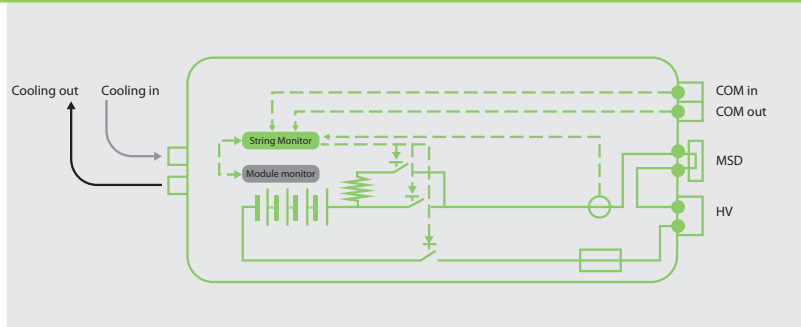


www.icpt.pl

Impact Clean Power Technology S.A.
Al. Jerozolimskie 424 A , 05-800 Pruszków, Poland
phone: +48 22 758 68 65
e-mail: info@icpt.pl, www.icpt.eu

Parameters

Operating conditions of Battery Pack	
	288S1P
Discharge Current Continuous	92 A
Discharge Current Maximum	184 A
Discharge Ambient Temp. Range	-30°C to 55°C
Charge Current Continuous	92 A
Charge Current Maximum	184 A
Charge Ambient Temp. Range	0°C to 55°C
Protection class	IP 67
Thermal Management System	Liquid cooling
Homologation	UN ECE R10.06 UN ECE R100.02
Precharge circuit	YES

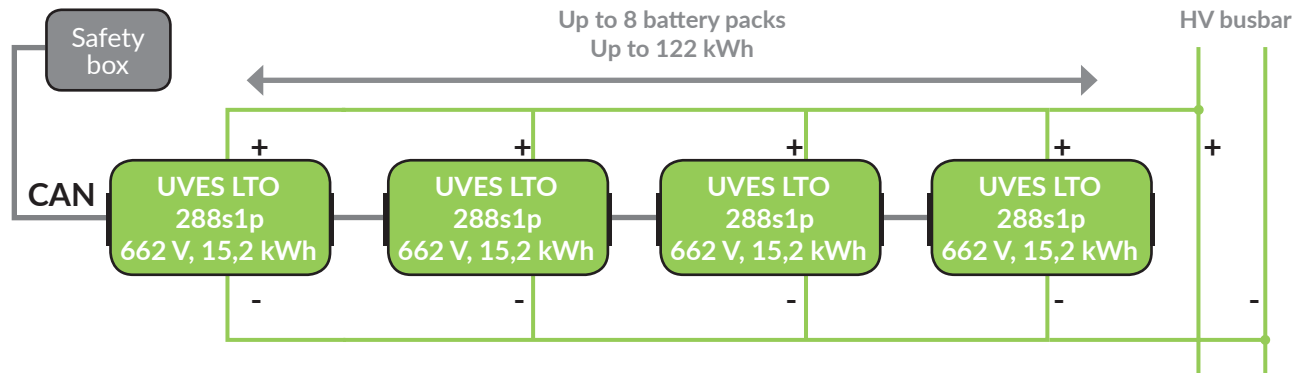


Battery Pack (single container) Configuration					
Cells config.	Voltage			Capacity	Energy
	Min.	Nom.	Max.		
288S1P	576 V	662 V	778 V	23 Ah	15,2 kWh*

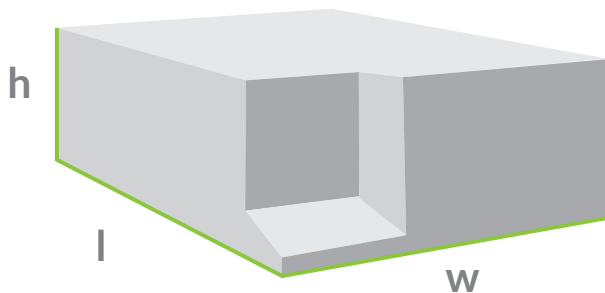
System configurations (examples)				
	Voltage	Capacity	Charge/discharge current continuous	Energy
x2 battery packs in parallel	662 V	46 Ah	184 A / 184 A	30,4 kWh*
x4 battery packs in parallel	662 V	92 Ah	368 / 368	60,8 kWh*
x6 battery packs in parallel	662 V	138 Ah	552 A / 552 A	91,2 kWh*

*usable 80%

Example of system configuration



Mechanical parameters



Dimensions l x w x h	1054 x 769 x 340 mm
Weight	268 kg

www.icpt.pl

Impact Clean Power Technology S.A.
Al. Jerolimskie 424 A , 05-800 Pruszków, Poland
phone: +48 22 758 68 65
e-mail: info@icpt.pl, www.icpt.eu

IMPACT